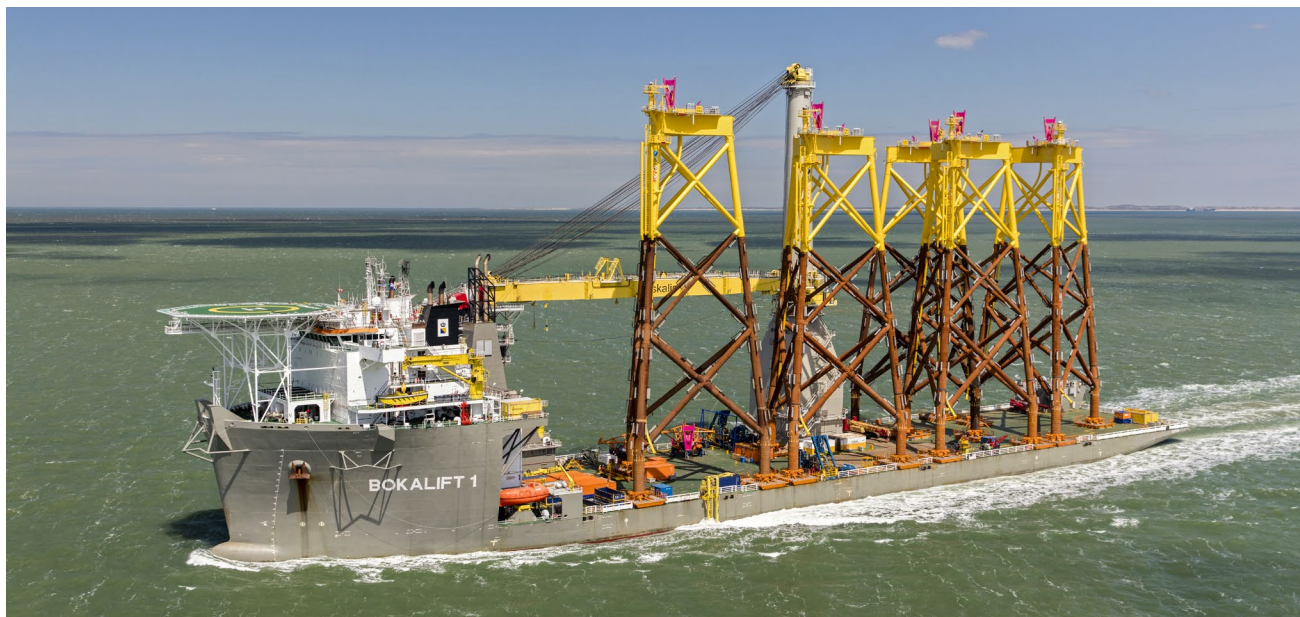


EQUIPMENT SHEET

BOKALIFT 1

TRANSPORTATION & INSTALLATION VESSEL



CONSTRUCTION / CLASSIFICATION

Vessel built by	Keppel Singapore 2017
Year of conversion	2017
Classification	BV ✕ Hull ✕ Mach, Cleanship Ice, Class 1D
IMO	9592850
Call sign (flag)	5BVH4 (Cyprus)

FEATURES

Accommodation	150 persons SPS compliant
Main crane	Huisman OMC 3,000 t
Cargo deck:	
Size	6,300 m ²
Rated	25 t/m ²
Max deck load	15,000 t
Max. transit speed	12.5 kn
Store crane	2 x 30 t at 10 m radius 20 t at 16.5 m radius
Air draft	85 m
Helideck	Suitable for S-61N and S-92 max take-off weight: 12.8 t

MAIN VESSEL DATA

DP system	Kongsberg DP-2
Reference systems	DGPS, HiPaP
Length overall	216 m
Breadth	43 m
Depth moulded	13 m
Operating draft	8.0 - 9.0 m
Installed power	
Main engines	4 x 3,840 kW, 2 x 4,800 kW
Auxiliary engine	1,110 kW

PROPULSION

Main sailing	2 x 5,250 kW
Retractable	4 x 3,500 kW
Bow thrusters	2 x 1,200 kW
Mooring system	Optional 8-point mooring system
Ballast capacity	2 x 1,500 m ³ /hr
Anti-heeling system	8 x 2,000 m ³ /hr

MAIN CRANE

LIFTING CAPACITY

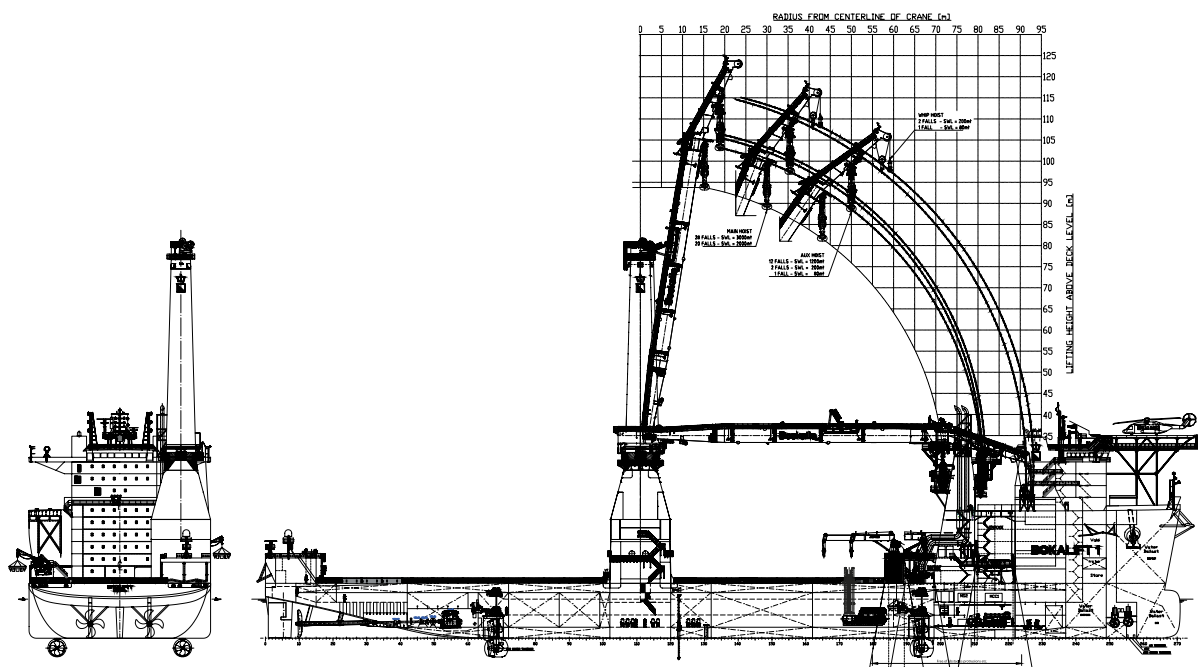
Main block	3,000 t up to 28 m radius 800 t up to 72 m radius
Auxiliary hoist	1,200 t up to 50 m radius 600 t up to 81 m radius
Whip hoist (double fall)	200 t up to 92 m radius
Whip hoist (single fall)	80 t up to 94 m radius

LIFT HEIGHT ABOVE DECK

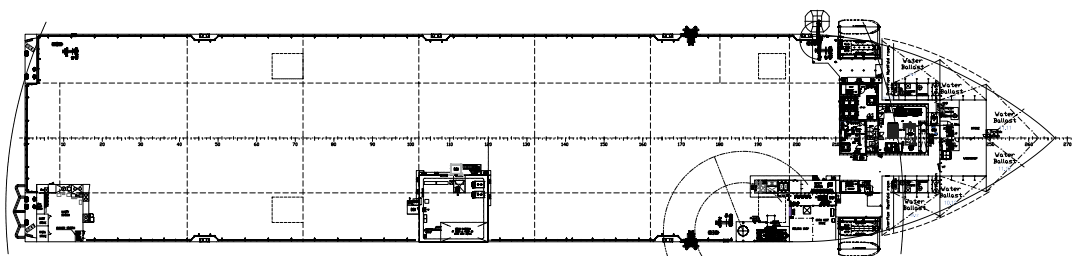
Main block	90 m at 30 m radius
Auxiliary block	99 m at 35 m radius

DEPTH RANGE

Auxiliary block	1,128 t at 230 m water depth 330 t at 900 m water depth
Whip hoist	Single line 1,900 m water depth



SIDE VIEW



TOP VIEW

