

HEAVY LIFT VESSELS



BOKALIFT 1 DP-2 3000 T CRANE VESSEL



CONSTRUCTION/CLASSIFICATION

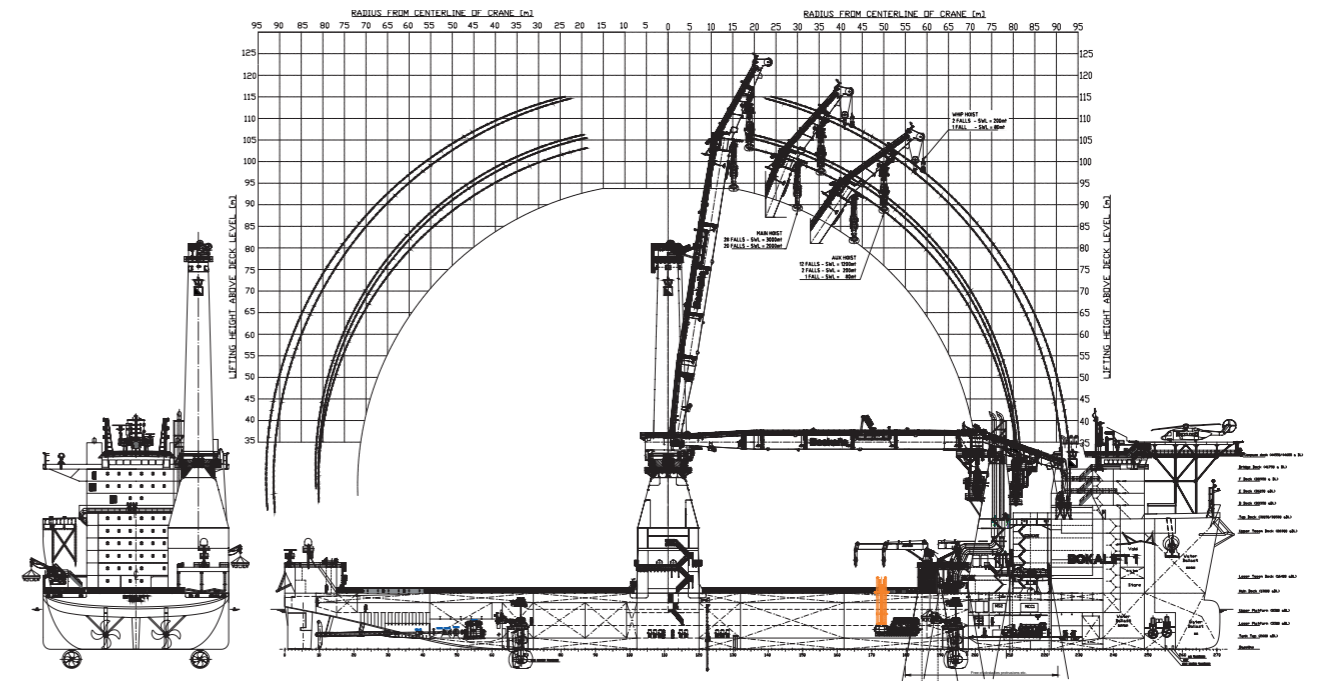
Vessel built by	Guangzhou Shipyard International Co. Ltd. 2012
Year of conversion	2017
Classification	BV <input checked="" type="checkbox"/> Hull <input checked="" type="checkbox"/> Mach, Cleanship Ice, Class 1D
IMO	9592850
Call sign (flag)	5BVH4 (Cyprus)

FEATURES

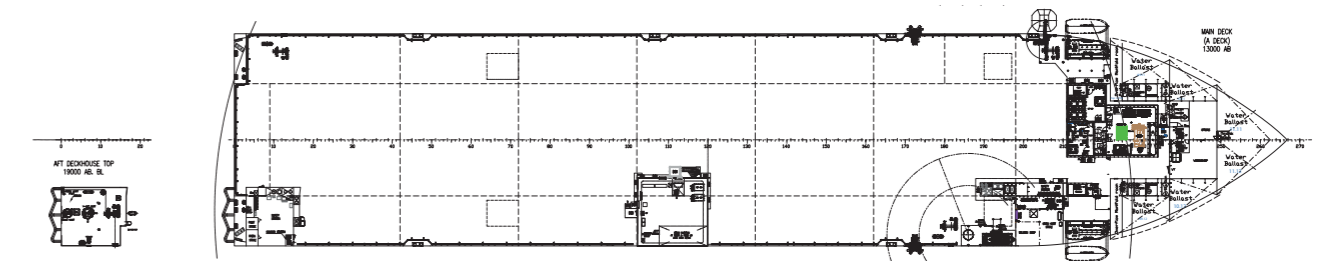
Accommodation	150 persons SPS compliant
Lifting Capacity main block	3,000 T up to 28 m radius
auxiliary block	1,200 T up to 50 m radius 800 T up to 81 m radius
whip hoist (double fall)	200 T up to 92 m radius
whip hoist (single fall)	80 T up to 94 m radius
Lift height above deck main block	90 m at 30 m radius
auxiliary block	99 m at 35 m radius
Depth range auxiliary block	1,128 T at 230 m water depth
Aux block, re-reeved for max. depth range	330 T at 900 m water depth Depth range whip block single line 1,900 m water depth
Cargo deck Size	6,300 m ²
Rated	25 T/m ²
Max deck load	15,000 T
Max. transit speed	12.5 kn
Store crane	2 x 30 T at 10 m radius 20 T at 16.5 m radius
Air draft	85 m
Helideck	Suitable for S-61N and S-92 max take-off weight: 12.8 T

MAIN VESSEL DATA

DP System	Kongsberg DP-2
Reference systems	DGPS HiPaP
Vessel dimensions	
Length oa	216 m
Breadth	43 m
Depth moulded	13 m
Operating draft	8.5 m (expected)
Installed power	
Main engines	4 x 3,840 kW 2 x 4,800 kW
Auxiliary engine	1,110 kW
Propulsion	
Main sailing	2 x 5,250 kW
Retractable	4 x 3,500 kW
Bow thrusters	2 x 1,200 kW
Mooring system	Optional 8-point mooring system
Ballast capacity	2 x 1,500 cum/hr
Anti-heeling system	8 x 2,000 cum/h



SIDE VIEW



TOP VIEW

TAKLIFT 4



CONSTRUCTION/CLASSIFICATION

Year of construction	1981
Classification	LR X 100 A 1 shearlegs pontoon LA
Call sign	PHWS

FEATURES

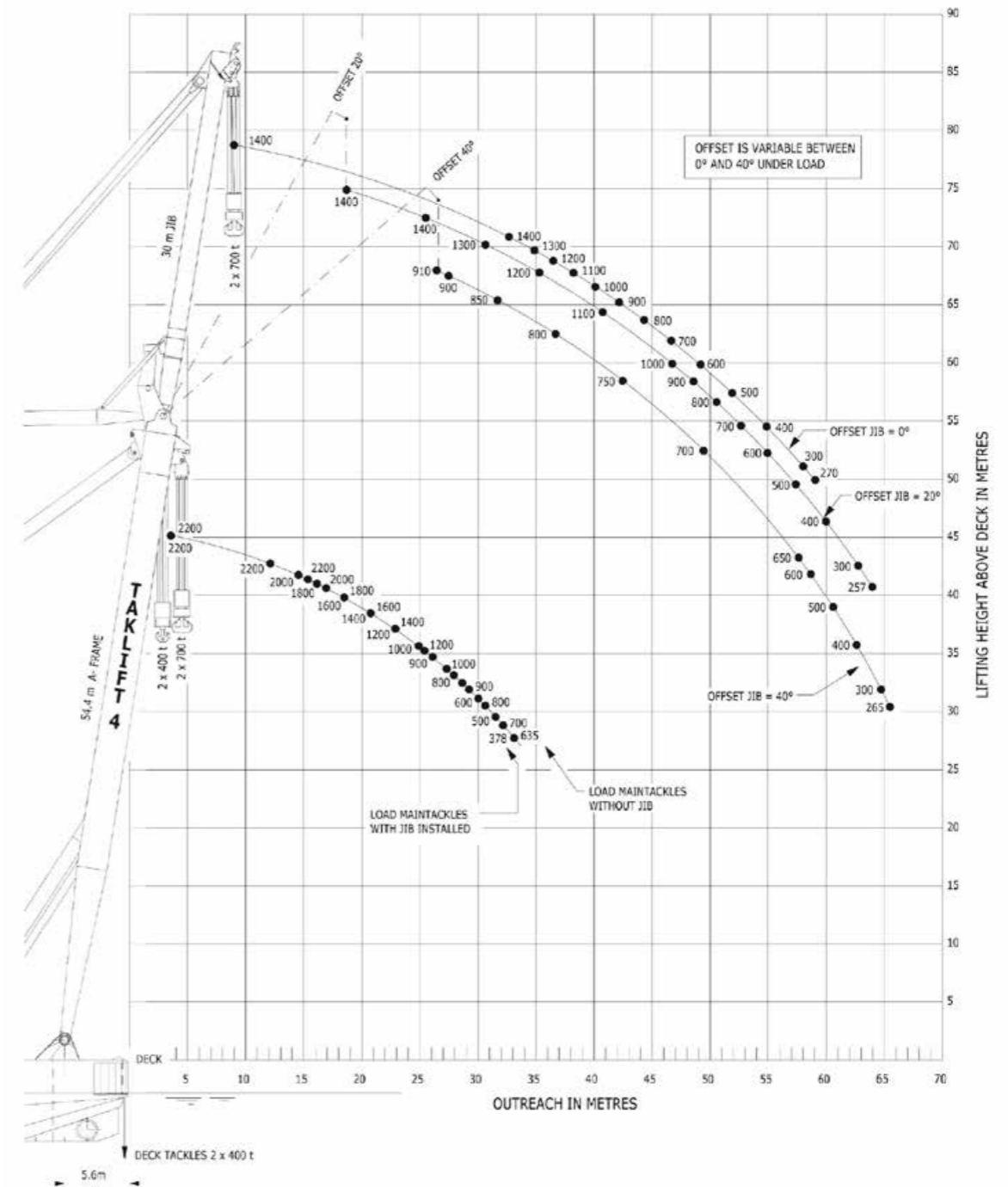
Accommodation for 30 people (can be increased).

MAIN DATA

Gross tonnage	5,695 R.T.
Net tonnage	1,708 R.T.
Length	83.20 m
Beam	36.90 m
Depth	7.00 m
Draught (minimum)	3.00 m
Draught (maximum)	6.02 m
Propulsion	2 x 1,000 kW
Bowthruster	2 x 440 kW
Aft	3 x 25 tonnes capacity 500 m of 44 mm diameter wire rope 2 x 40 tonnes capacity 625 m of 48 mm diameter wire rope
Forward	3 x 25 tonnes capacity 500 m of 44 mm diameter wire rope

Notes:

- Both main tackles and jib tackles can operate together, load capacity on request.
- Loads in metric tons [t].



CAPACITY DIAGRAM

TAKLIFT 7



CONSTRUCTION/CLASSIFICATION

Year of construction	1976
Registration	Rotterdam
Classification	GL X 100 A5 MC
Call sign	P H W N

FEATURES

Accommodation for 36 persons (can be increased).

ANCHOR WINCHES

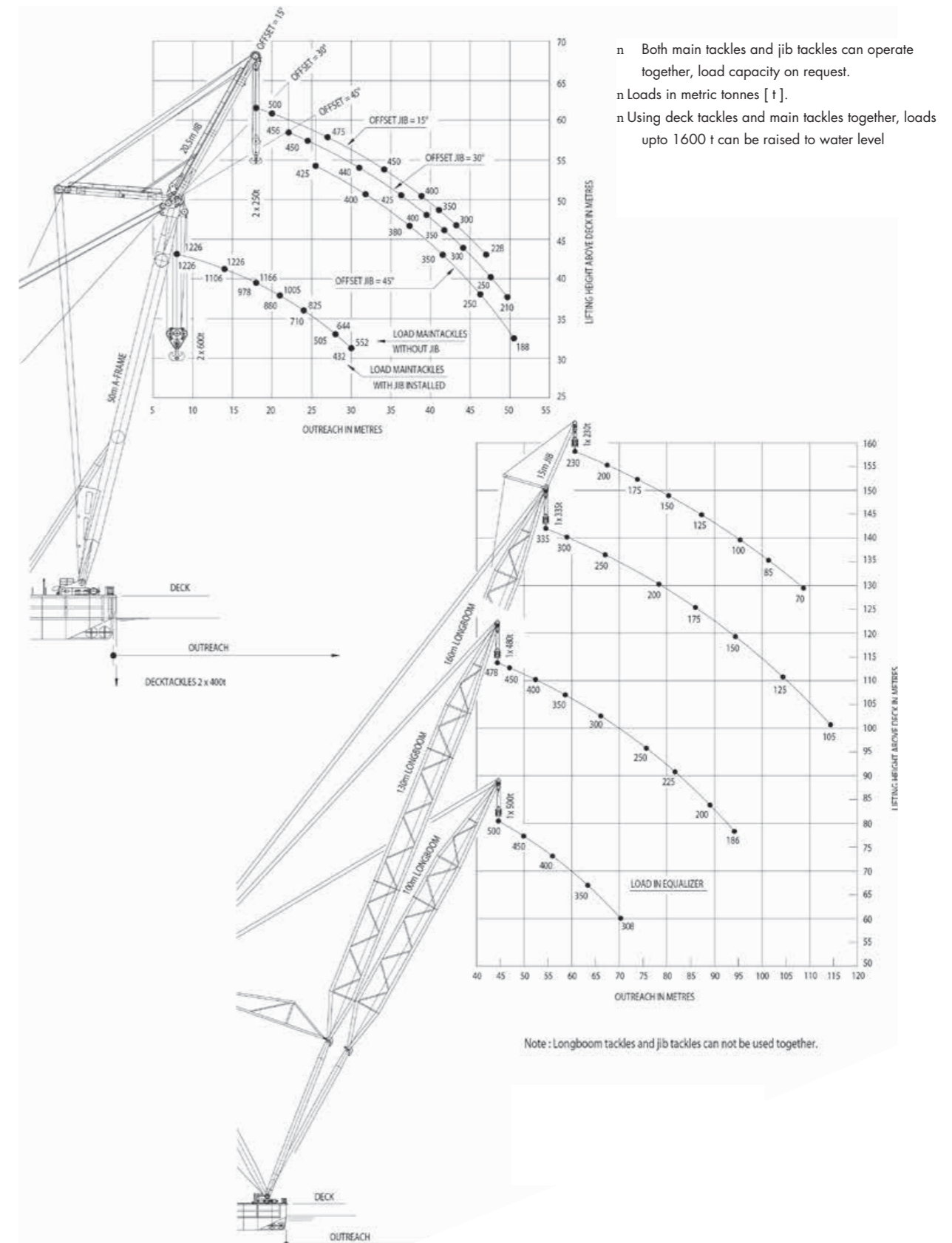
Aft	1 x 10 t capacity 235 m of 56 mm Ø chain
-----	---

MOORING WINCHES

Aft	3 x 10/5 t capacity 220 m of 28 mm Ø wire rope 2 x 30/10 t capacity 1000 m of 50 mm Ø wire rope
Forward	4 x 10/5 t capacity 220 m of 28 mm Ø wire rope 2 x 30/10 t capacity 1000 m of 50 mm Ø wire rope

MAIN DATA

Gross tonnage	3,343 R.T.
Nett tonnage	1,003 R.T.
Length overall	72,56 m
Beam overall	30.50 m
Depth	5.50 m
Min. draught	2.50
Max. draught	4.90 m
Sailing height min.	49.00 m
Propulsion	3 x 460 kW
Bowthruster	2 x 386 kW



CAPACITY DIAGRAM

ASIAN HERCULES I



CONSTRUCTION/CLASSIFICATION

Year of construction	
Registration	Singapore
Classification	ABS ✕ A1Barge
Call sign	9V3256

PROPELLING MACHINERY

2 x AQM 632	output 1194 kW
-------------	----------------

LIFTING CAPACITIES

Main hoists	2 x 500 t + 2 x 300 t
JIB II hoists	2 x 200 t
JIB III hoists	2 x 500 t

SEA TRANSIT

The vessel can transit across seas without load as per ABS unrestricted service with boom and outrigger resting backwards

FEATURES

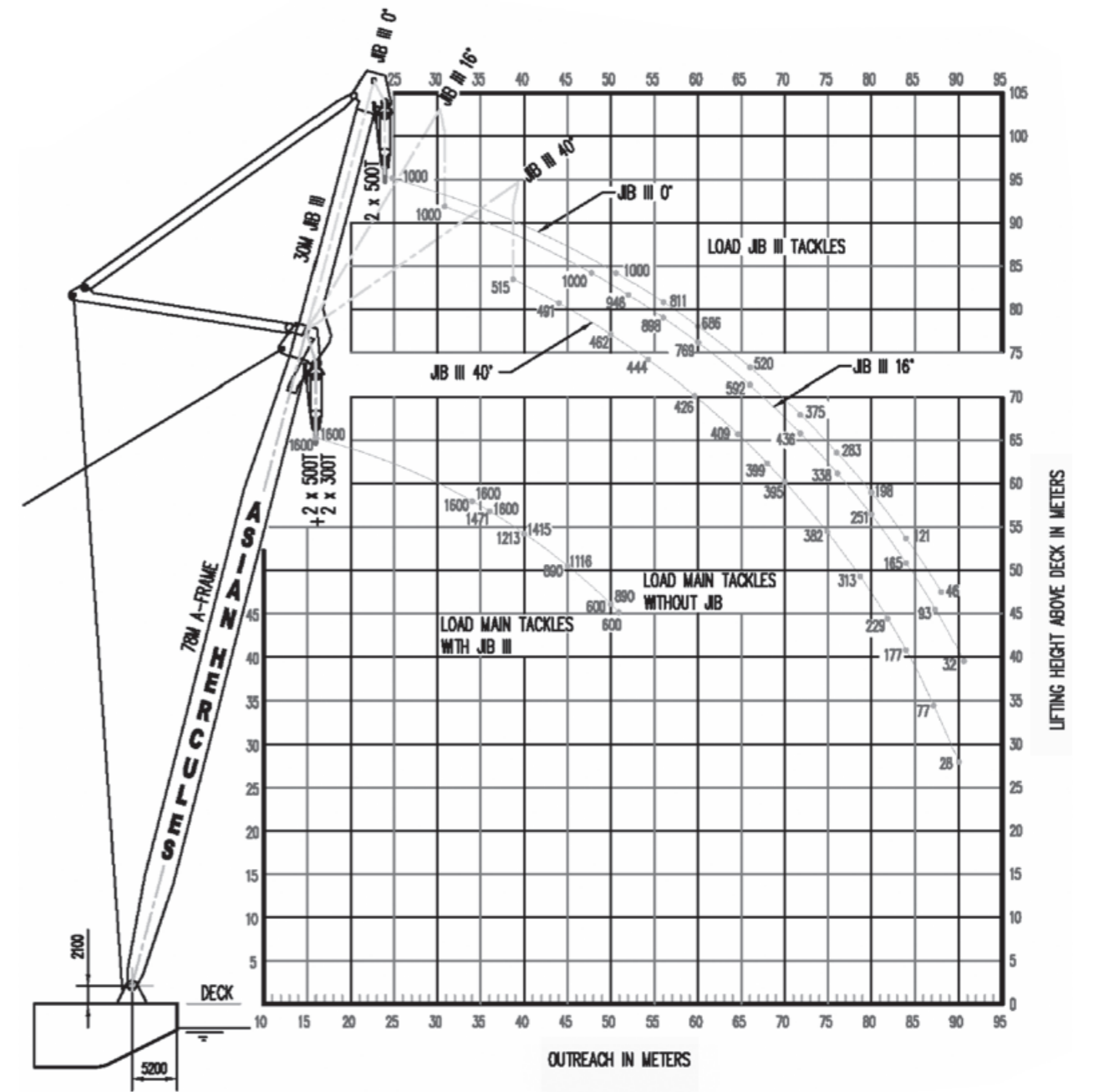
Accommodation for 29 persons

MAIN DATA

Gross tonnage	5,946 t
Nett tonnage	3,407 t
Length overall	70 m
Beam overall (moulded)	42 m
Depth (moulded)	7.2 m
Full Load Transit Draft	4.387 m
Minimum Transit Draft (even trim)	
"A" frame stowed	3.84 m
"A" frame upright	2.80 m

Maximum draft after lift

2 x 800 t lift	
Fwd Draft	5.75 m
Aft Draft	3.00 m
4 x 300 t lift	
Fwd Draft	4.80 m
Aft Draft	3.90 m
Speed	5 knots



GUIDELINE CAPACITY DIAGRAM - ASIAN HERCULES JIB III

- n All loads are in metric tonnes and for inland water
- n Following load capacities are on request:
 - 800 t balance beam details
 - 1000 t balance beam details
 - 1600 t balance beam details
 - Load balancing by combined lifting

ASIAN HERCULES II



CONSTRUCTION/CLASSIFICATION

Year of construction	1997
Classification	ABS A1(E) AMS
Call sign	P C I W

FEATURES

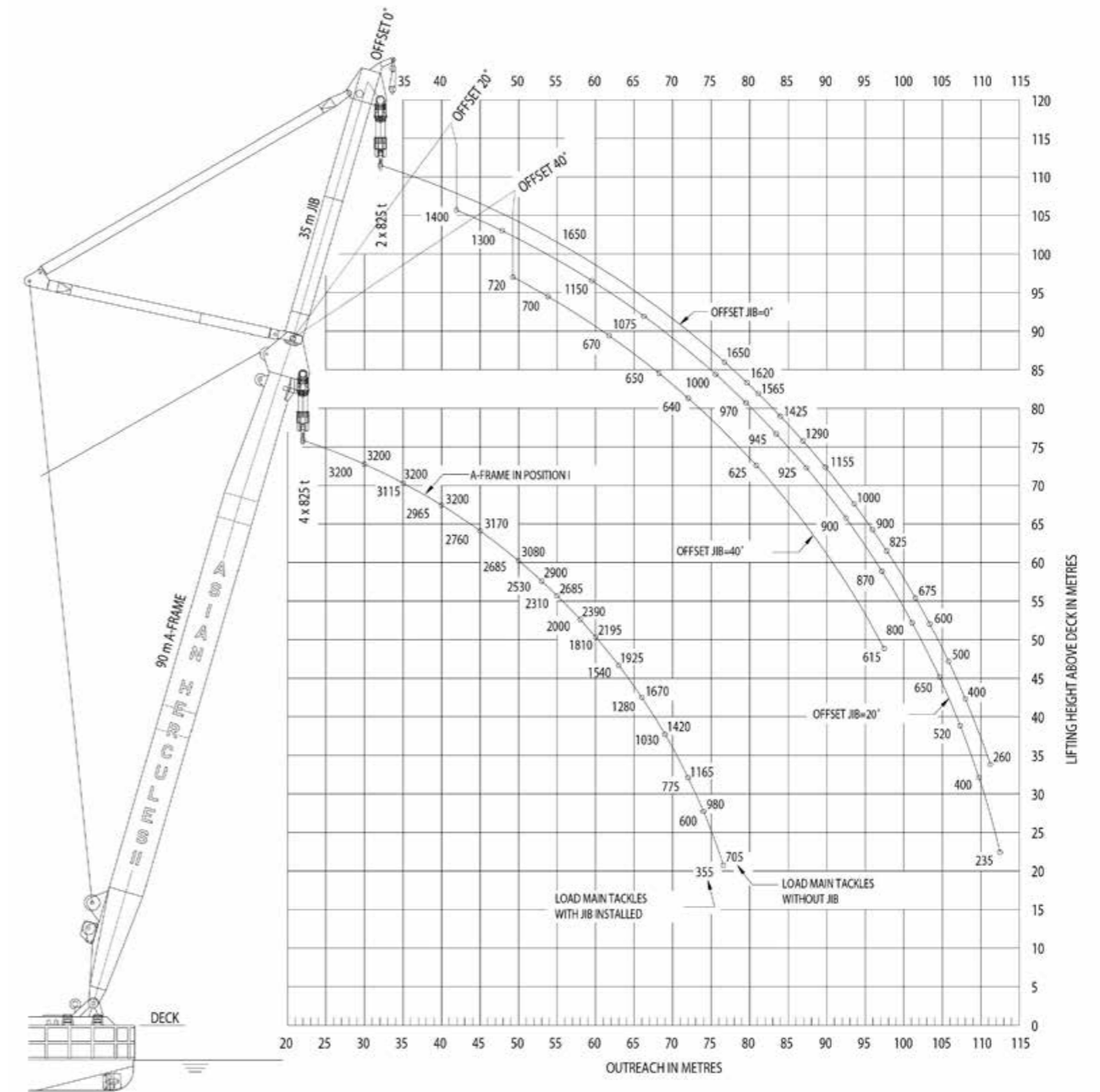
Accommodation for 24 persons (can be increased).

MOORING WINCHES

8 point mooring 30 t. Cap. 1,000 m of 44 mm Ø wire rope

MAIN DATA

Gross tonnage	10,560 R.T.
Nett tonnage	3,168 R.T.
Length overall	91.35 m
Beam overall	43.35 m
Min. draught	2.75 m
Max. draught	8.50 m
Sailing height min.	56.00 m
Propulsion	4 x 813 kW Azimuth
Deck load	15 t/m ²



CAPACITY DIAGRAM

All loads are in metric ton [t] and for inland waters.

All load capacities are without traverses.

The following load capacities are on request;

- n A-frame in position II and III
- n Combined lifting with both main- and jib tackles
- n Offshore

ASIAN HERCULES III



CONSTRUCTION/CLASSIFICATION

Year of construction	2015
Registration	Singapore
Classification	ABS A1, + AMS - Heavy Lift Vessel
Call sign	9V2514

MOORING WINCHES

8 point mooring 60 t cap. 1,200 m of 46 mm dia. wire rope

WINCHES

2 units cargo winches capable of pulling 20 MT at 10 m/min

2 unit class anchor winch for handling the 6,975 kg HHP bow anchor via 76 mm grade 3 anchor chain

Luffing 2 units luffing winches providing maximum luffing speed of 1.00 m/min at full load

Main hoist 4 units main hoisting winches for A-frame and 2 units for Jib, each capable of hoisting speeds 2 m/min at full load of 1250 MT and 5 m/min at light/no load

Jib adjustment 2 units jib adjustment winches, mounted on the A-frame, for adjustment of the jib without load from 00 to 400 in respect to the A-frame

20 MT aux. hoist 2 units aux. hoisting winches for A-frame and 1 unit for Jib each capable of hoisting speeds of 10m/min at full load of 20 MT

MAIN DATA

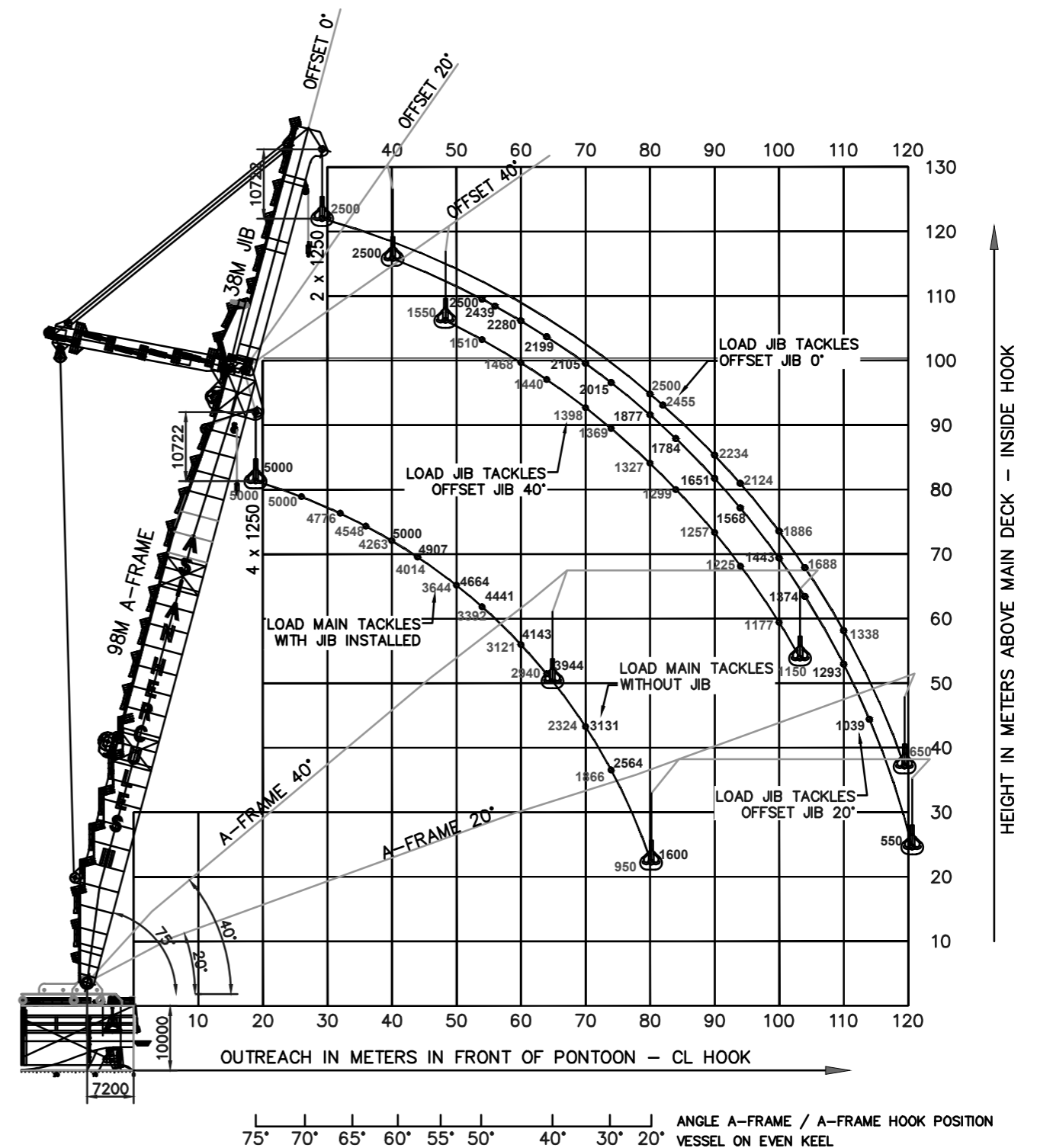
Gross tonnage	16,805 R.T.
Nett tonnage	5,041 R.T.
Length overall	106.42 m
Beam overall (moulded)	52.00 m
Depth (moulded)	10.00 m
Displacement	26,456 t (even keel @ 5.50 m)
Speed	7 knots (4 x each about 2,000 kW)
Deck loading	20 mt/m ²
Fuel bunker capacity	2,021 m ³
Fresh water capacity	474 m ³
Ballast water capacity	14,438 m ³

FEATURES

Accommodation for 45 persons

GENERATORS

Main generator	4 units diesel engine driven generators of output capacity 4,364 kW in total
Emergency / Auxiliary generator	1 unit diesel engine driven generator of output capacity 750 kW



GUIDELINE CAPACITY DIAGRAM - A-FRAME IN POSITION I

- n All loads are in metric tonnes and for inland water
- n All load capacities are without traverses
- n Following load capacities are on request:
 - A-frame position III
 - Combined lifting with both main and jib tackles
 - Offshore

GIANT 7



CONSTRUCTION/CLASSIFICATION

Year of construction	2015
Classification	Lloyd's Register
Class notation	Crane Barge
Flag State	Belgium
Owner	Boskalis
Yard	Keppel Nantong Shipyard Co., Ltd.

ACCOMMODATION

Cabins: 73 berths. Messroom and galley, hospital, recreation room, office space, conference room, spacious bridge/control room

BALLAST SYSTEM

4 x Ballast pump	1,600 m ³ /hr
Tank capacity	30,180 m ³
Drinkwater capacity	855 m ³
Sewage storage	1,979.2 m ³
Fuel oil	1,056.4 m ³

MAIN DATA

Length o.a.	137.00 m
Breadth moulded	36.00 m
Depth moulded (Main deck)	8.50 m
Draft maximum	6.45 m
Deadweight	18,661 t
Displacement at summer draft	28,357 t
Deck space (-/- accommodation)	4,227 m ²

CRANE

Crane	Liebherr BOS 35000-600
Main hook	600 t (1,000 t optional)
Aux. Hook	50 t
Rules and Regulations	DNV, EN 13852-2
Certifying Authority	Lloyd's Register
Design Temperature	-10°C
Ambient Temperature	-25/+45°C
Wind Speed Operational	max. 25 m/s
Gust Boom Stowed	max. 63 m/s

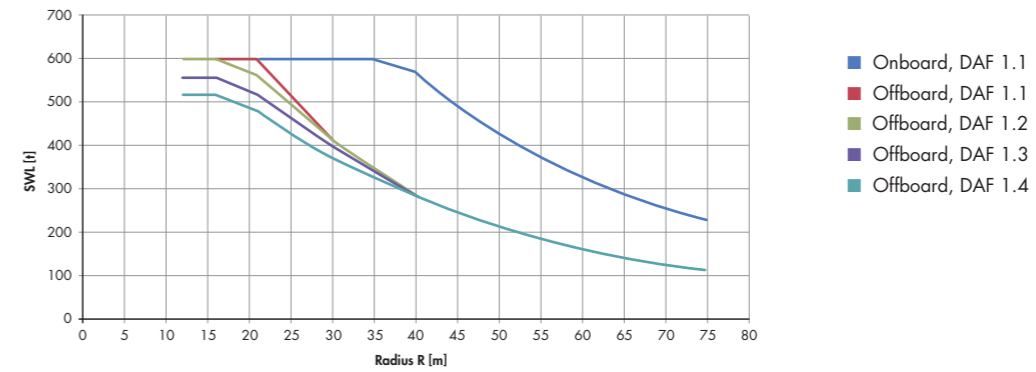
MAIN HOIST LAOD CHARTS: 12-FALL REEVING

Design code:	DNV, "Standard for certification No. 2.22 Lifting Appliances". 2013	
Calculation method:	Default dynamic method	
Conditions:	Crane location:	Barge
	Crane is lifting or from:	1. Onboard: Onboard – Onboard 2. Offboard: Onboard – Barge
Max. Mean wind speed:	25 [m/s]	Offlead: 2.5 / (5.0) [°]
Static trim of installation:	3 / (3) [°]	Sidelead: 5.0 / (2.5) [°]
Static heel of installation:	3 / (3) [°]	
Minimum elevation:	14 [m]	
Maximum elevation:	26 [m]	

Offlead: 2.5 / (5.0) [°]
Sidelead: 5.0 / (2.5) [°]

Please notice:

Maximum allowable rope fleet angle: 5°



600 T CONFIGURATION

LIEBHERR

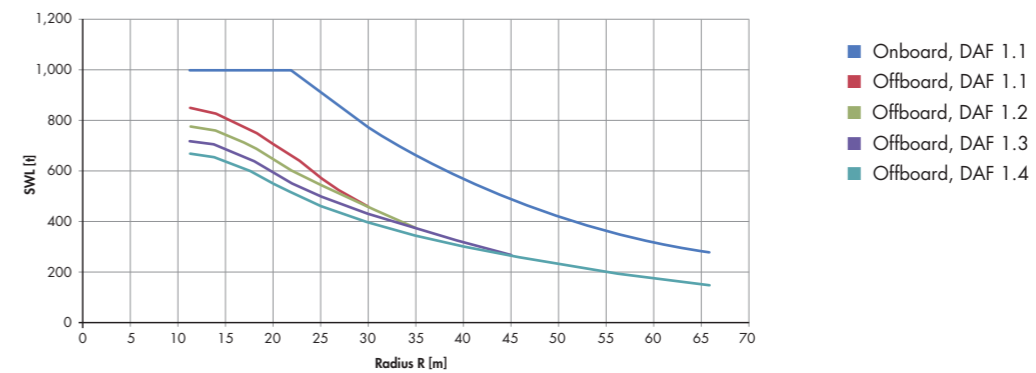
MAIN HOIST LAOD CHARTS: 20-FALL REEVING

Design code:	DNV, "Standard for certification No. 2.22 Lifting Appliances". 2013	
Calculation method:	Default dynamic method	
Conditions:	Crane location:	Barge
	Crane is lifting or from:	1. Onboard: Onboard – Onboard 2. Offboard: Onboard – Barge
Max. Mean wind speed:	25 [m/s]	Offlead: 4 [°]
Static trim of installation:	3 / (3) [°]	Sidelead: 4 [°]
Static heel of installation:	3 / (3) [°]	
Minimum elevation:	14 [m]	
Maximum elevation:	26 [m]	

Offlead: 4 [°]
Sidelead: 4 [°]

Please notice:

Maximum allowable rope fleet angle: 5°



1000 T CONFIGURATION

LIEBHERR

BORNEO



CONSTRUCTION/CLASSIFICATION

Year of construction	2009
Classification (dual class)	GL
Certification	SPS

FEATURES

Accommodation	152 p
8 point Mooring system	
Payout speed	300 m/min
Main Supply	3 x 500 kVA
Helideck (S61N)	VA

CONSTRUCTION SERVICES

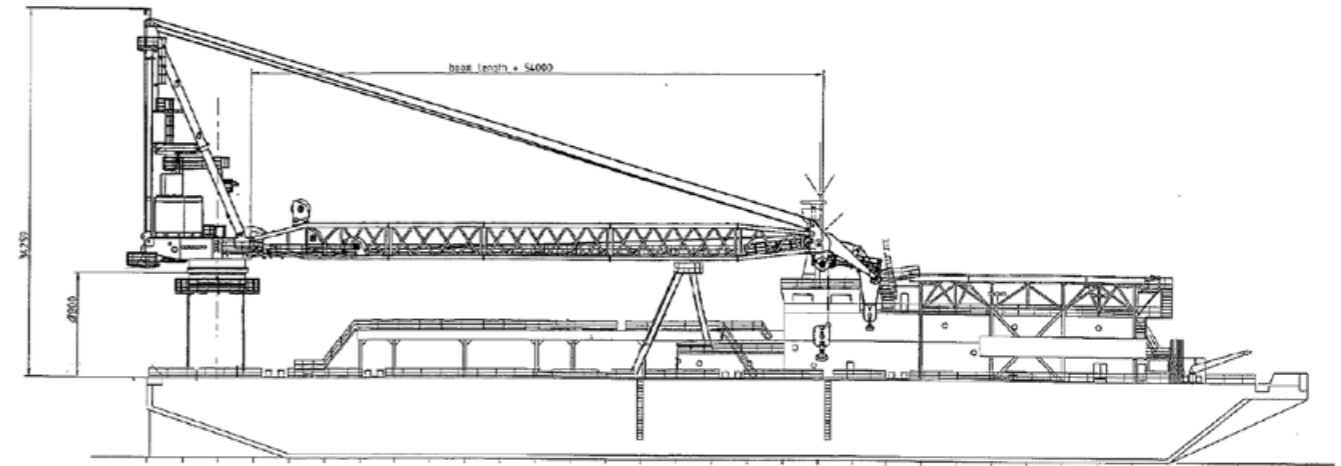
Mooring & Riser Installations
Subsea installations
Accommodation support
Pipelay

MAIN DATA

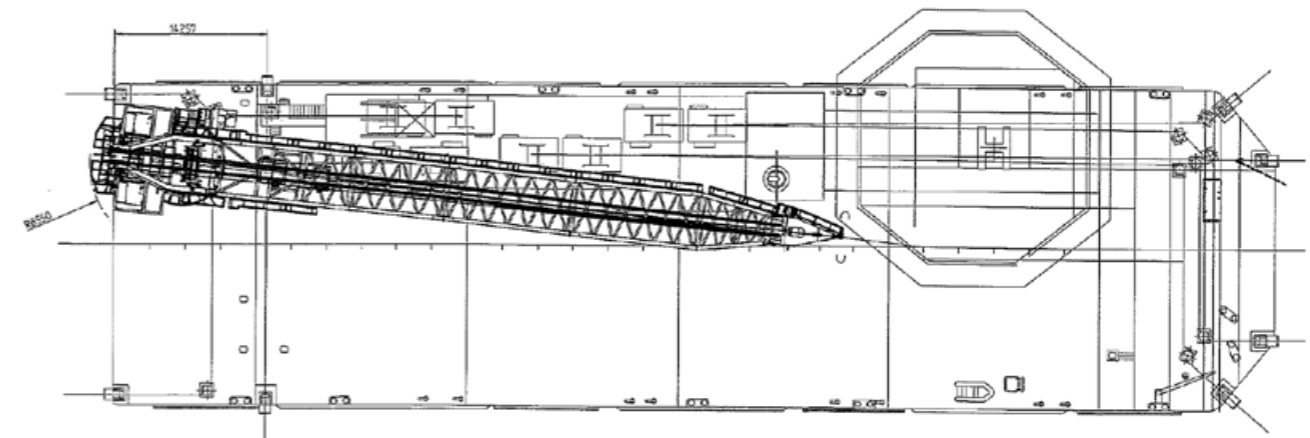
Deadweight	5244 t
Length overall	110 m
Breadth	30 m
Depth	7.6 m
Clear deck space	1900 m ²
Deck loading	15 t/m ²

CRANE

500 t Liebherr Litronic pedestal crane
500 t @ 16m
150 t @ 44 m auxiliary crane



SIDE VIEW



TOP VIEW DECK LEVEL

The information contained in this brochure is for guidance purposes only and may be subject to changes.

Boskalis

Rosmolenweg 20

PO Box 43

3350 AA Papendrecht

The Netherlands

T +31 78 6969000

E offshore.energy@boskalis.com

www.boskalis.com/offshore

