



CONSTRUCTION/CLASSIFICATION

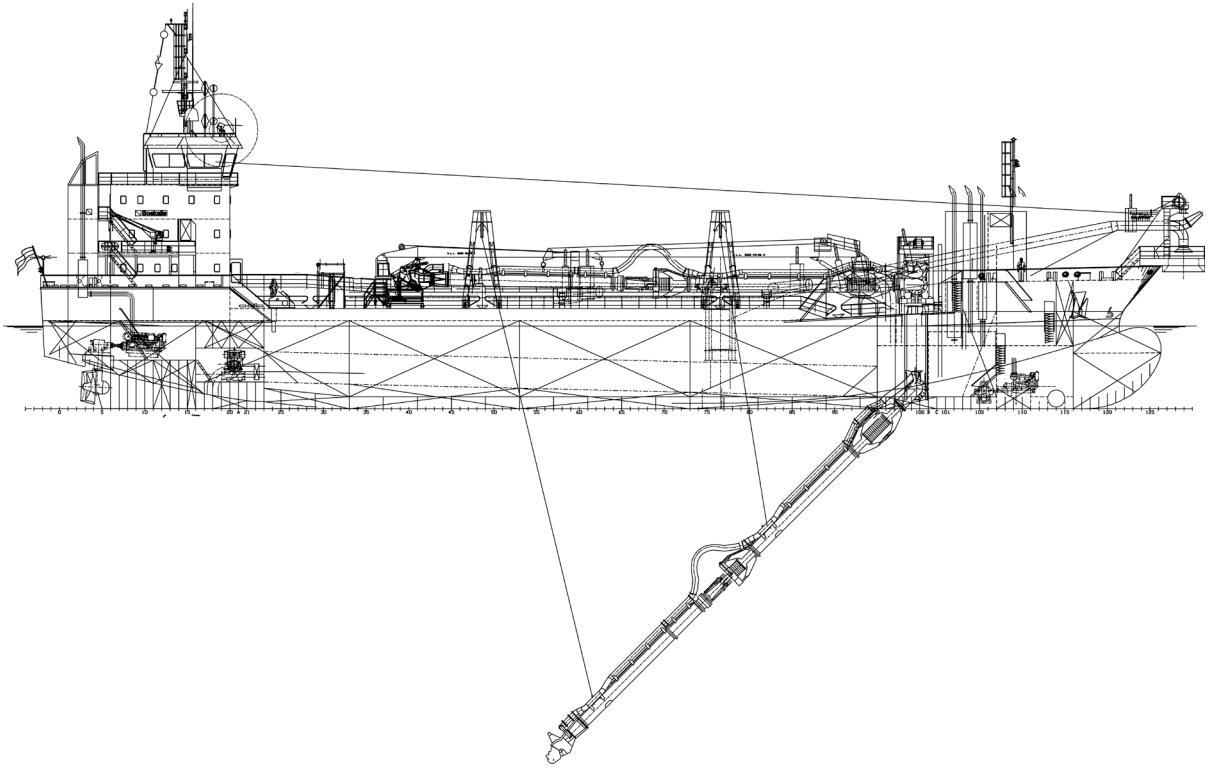
| | |
|----------------------|--|
| Built by | Shipkits B.V. |
| Year of construction | 2013 |
| Classification | I ✘ HULL ✘ MACH ✘ Hopperdredger. Unrestricted Navigation. Dredging within 15 miles from shore or within 20 miles from port; or dredging over 15 miles from shore with a significant wave height restriction to 2.5 m. ✘ AUT-UMS |

FEATURES

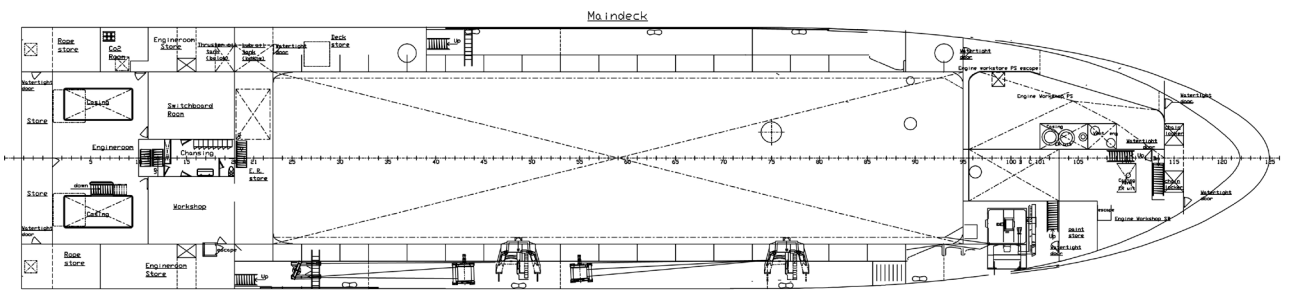
| |
|---|
| Degassing system installed. |
| Open bottom doors remain above the flat bottom of the vessel enabling very shallow dumping. |
| Highly manoeuvrable using rudder propellers. |
| Fully computerised engine room with certificate for unattended operation. |
| Automatic discharge valve can be fitted into the overflow. |
| Discharging through bottom doors, shore discharge and rainbow nozzle |
| Fully compliant with the latest international requirements such as modern engines with low emissions. |
| State of the art technology to minimize environmental impacts. |

MAIN DATA

| | |
|-----------------------------|----------------------|
| Gross tonnage | 4,320 |
| Length overall | 92.10 m |
| L.p.p. | 84.87 m |
| Breadth | 19,00 m |
| Moulded depth | 7.25 m |
| Max. draught Int. load line | 5,93 m/ DWT 5392 |
| Max. draught dredging | 6,82 m/ DWT 6750 |
| Hopper capacity | 4,500 m ³ |
| Suction pipe diameter | 900 mm |
| Max. dredging depth | 30 m |
| Sailing speed loaded | 11 kn |
| Total installed power | 9,472 kW |
| Sand pump output | 1,825 kW |
| Jet pump output | 2*746 kW |
| Pump ashore output | 3,650 kW |
| Propulsion power sailing | 2*1,491 kW |
| Bow thruster | 500 kW |



SIDE VIEW



TOP VIEW DECK LEVEL