



### GENERAL INFORMATION

|                              |                           |
|------------------------------|---------------------------|
| Type of Vessel               | Geotechnical Survey       |
| Year of Build                | 1978                      |
| Reconfigured                 | 1999                      |
| Flag                         | Panama                    |
| Port of Registry             | Panama                    |
| Call Sign                    | 3ETG2                     |
| IMO Number                   | 7801556                   |
| MMSI Number                  | 354641000                 |
| Owner & Operator Information | Horizon Survey<br>Company |
| Classification Society       | ABS                       |
| DP Class                     | DP2                       |

### CAPACITY

|                        |                       |
|------------------------|-----------------------|
| Fuel Oil Capacity      | 1010 m <sup>3</sup>   |
| Freshwater Capacity    | 614.90 m <sup>3</sup> |
| Ballast Water Capacity | 914.34 m <sup>3</sup> |

### DIMENSIONS

|                    |       |
|--------------------|-------|
| Length Overall (m) | 87    |
| Breadth (beam) (m) | 15.6  |
| Depth (m)          | 10.49 |
| Draft (m)          | Max 6 |
| Air Draft (m)      | 27.9  |
| GT (t)             | 3502  |
| NT (t)             | 1051  |

### MACHINERY AND PERFORMANCE

|                        |   |                            |
|------------------------|---|----------------------------|
| Main Engine(s) Type    | Caterpillar 3516B (2x1901KW),<br>and Power output | Mitsubishi s12R (2x1154KW) |
| Propulsion System      | 2x 1440 Kw CRP Azi Thrusters                      |                            |
| Auxillary Engines      | Yanmar 6GL-HT (2x620KW)                           |                            |
| Speed                  | Eco   | 8 kts                      |
|                        | Max   | 13 kts                     |
|                        | Transit   | 10Kts                      |
| Crane / Lifting System | 20T/20m   |                            |

**ACCOMMODATION**

|   |   |
|---|---|
| Accommodation: Nos. of Cabins           |   |
| Single                                  | 18  |
| Double                                  | 12  |
| Additional                              | 4x6 (crew)  |
| Total Berths                            | 66  |
| Laboratories                            | Survey Lab<br>Geotechnical Lab  |
| Workspaces for Onboard                  |   |
| Laboratory                              | 13 m <sup>2</sup>   |
| Workspaces for Onboard Data             |   |
| Interpretation / Office                 | 13 m <sup>2</sup>   |
| Dedicated space for soil sample storage |   |
|   | 13 m <sup>2</sup>   |
| Passenger Capacity                      | Nil   |
| Facilities Available (eg gym, rec room) | Gym, 2x TV lounge,<br>sauna, cinema,<br>conference room,<br>client office |

**SAFETY**

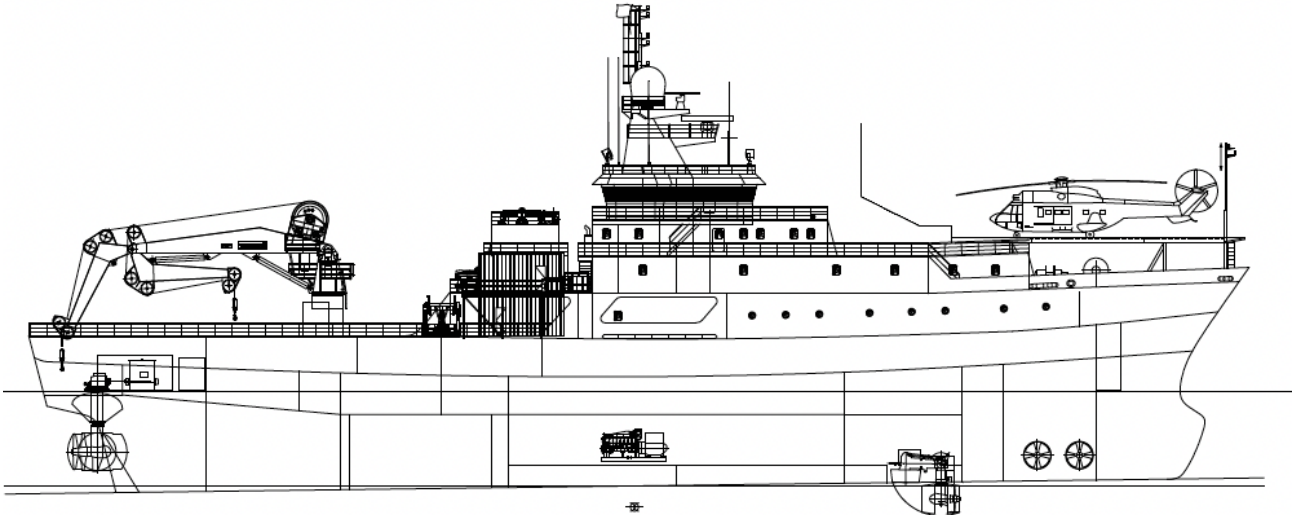
|                          |                                     |
|--------------------------|-------------------------------------|
| Lifeboats and Life Rafts | 8x inflatable liferafts<br>(25 pax) |
| Firefighting Equipment   | SOLAS-compliant FFE                 |
| Pollution Prevention     | MARPOL-compliant SOPEP              |

**NAVIGATION AND COMMS**

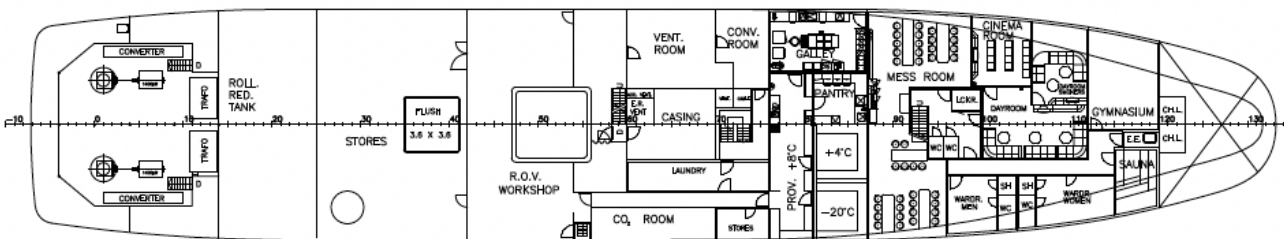
|                                  |                                     |
|----------------------------------|-------------------------------------|
| Advanced Radar Systems           | 2 JRC ARPA Radars                   |
| Positioning / Nav Systems        | LEICA-MX420                         |
| DPS                              | Kongsberg SDP 21 dual               |
| Comm Equipment (VHF, HR, SATCOM) | Sailor (VHF DSC, MF/HF DSC & SAT-C) |
| AIS                              | Saab R4                             |

**SURVEY EQUIPMENT**

|   |   |
|---|---|
| Rotary Drilling Equipment for BH (API)          | K2-20 rig   |
| Drill String Max Length                         | 200m bsb with 150-200m water depth  |
| Heave Compensation System                       | 4m SBF & drill string   |
| Mud System                                      | Straight flush system, 10000 litre mud tanks<br>with 2 compartments, 2x mud pumps |
| DtH In-Situ Testing Equipment                   | CPT, Seismic CPT  |
| DtH Sampling Equipment                          | Piston Sampling, Push Sampling, Hammer Sampler                                    |
| DtH Coring Equipment                            | PQ3 Triple-Tube Coring  |
| Geotechnical Soils/Processing Lab               | Yes   |
| Data Processing and Analysis Facilities Onboard | Yes   |
| Deep Seabed CPT Unit                            | No  |
| Seismic CPT                                     | Yes   |
| Other   | PS Logging, 3-Arm Calliper, In situ DtH HiRAT                                     |



**SIDE VIEW - PORT SIDE**



**TOP VIEW - DECK LEVEL**