



CONSTRUCTION / CLASSIFICATION

Built by	Verolme Shipyards Heusden B.V.
Year of construction	1997
Year of modification	2013
Classification	BV ✱ Hull ✱ Mach, ✱ AUT-UMS Hopper dredger Dredging within 15 miles from shore, or within 20 miles from port, dredging over 15 miles from shore with H.S. ≤ 3.5 m Unrestricted navigation Mon-shaft

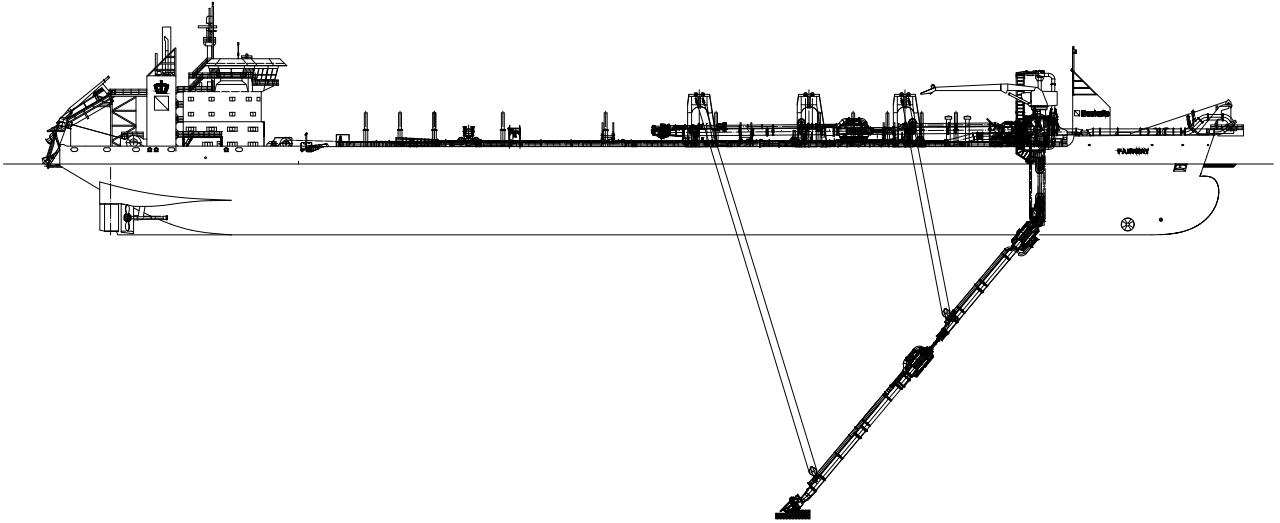
FEATURES

Optional dredging depth 83 m at PS, with submergible dredge pump.
2 independent flad-rudders
Extended in 2002 with 54 m
Equipped with DP/DT system
Equipped with TDM - measurement system

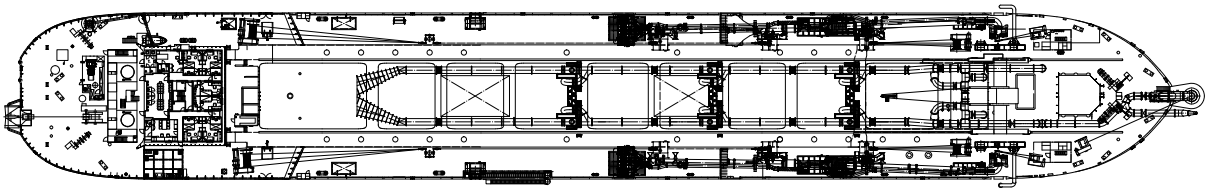
MAIN DATA

Gross tonnage	33,423 GT
Length overall	230.71 m
Breadth	32.00 m
Moulded depth	15.90 m (Aft ship)/ 16.85 m (Mid ship)

Max. draught Int. load line	13.50 m
Max. draught dredging load line	13.67 m
Carrying capacity (D.W.)	58,298 t
Hopper capacity	35,500 m ³
Displacement D.L.L.	82,910 t
Suction pipe diameter	2 x 1,200 mm
Max. dredging depth	70 m
Discharge systems	24 Bottom door sections Pump ashore Rainbow installation Back filling
Sailing speed loaded	16.0 kn
Total installed power	27,550 kW
Dredge pump output	SB: 6,000 kW (inboard dredge pump only) PS: 6,000 kW (inboard dredge pump only)
Jet pump output	3 x 1,000 kW
Pump ashore output	2 x 6,000 kW
Propulsion power sailing	23,000 kW
Bow thruster	2,650 kW



SIDE VIEW



TOP VIEW DECK LEVEL